

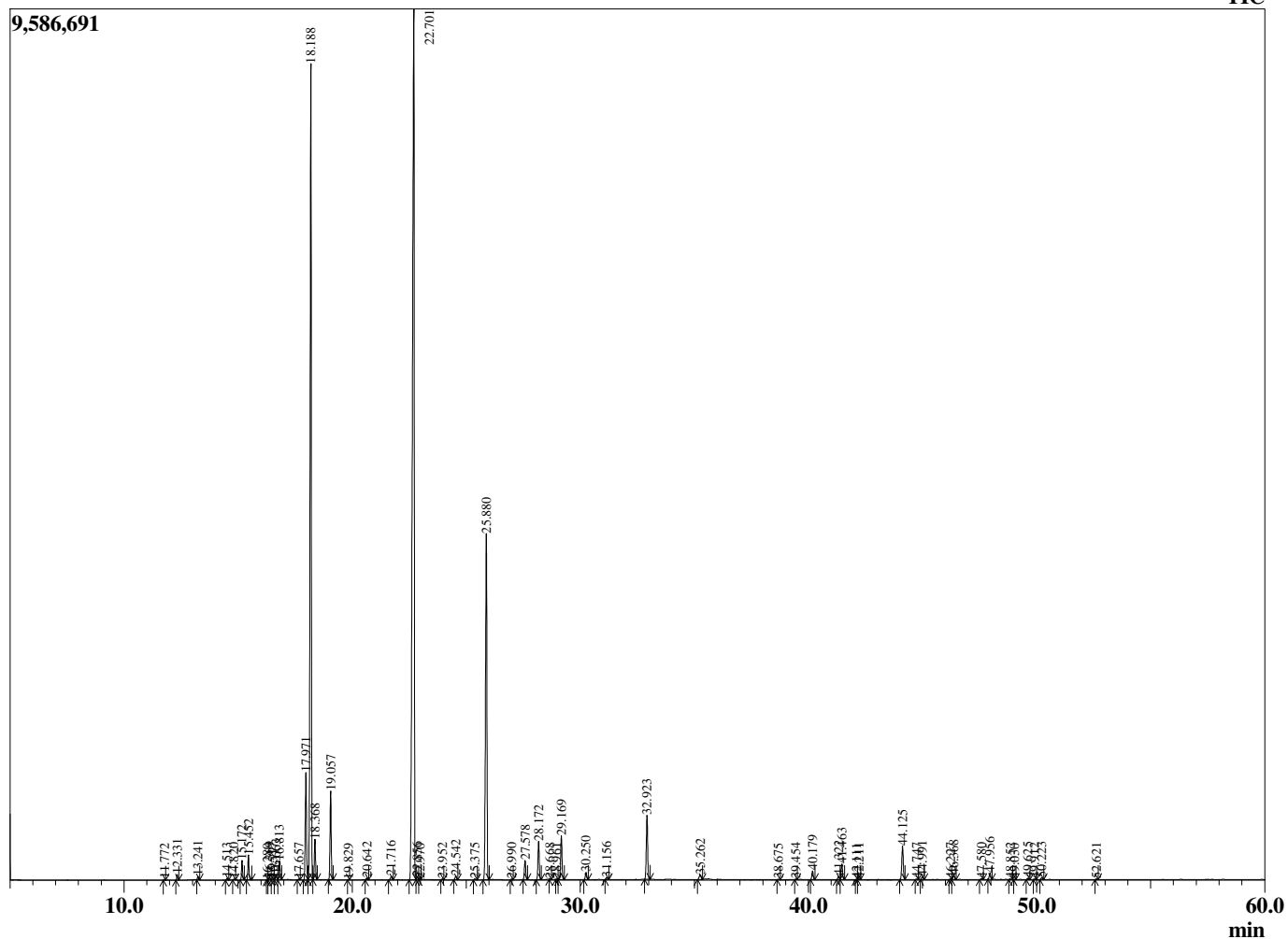
Sample Information

Type Sample : Essential Oil
 Name Injection : Lavandula latifolia
 Volume : 0.10

Lavender Spike
 Lot# SPK23-KW
 Country: Spain



Chromatogram Lavandula latifolia



R.Time	Name	Peak Report TIC	Area%
11.772	Tricyclene		0.02
12.331	alpha-Pinene		0.14
13.241	Camphene		0.10
14.513	Sabinene		0.04
14.820	beta-Pinene		0.02
15.172	3-Octanone		0.54
15.452	Myrcene		0.71
16.280	Octanal		0.01
16.369	Pseudolimonene		0.07
16.517	alpha-Phellandrene		0.03
16.663	delta-3-Carene		0.16
16.813	Hexyl acetate		0.55
17.657	para-Cymene		0.03
17.971	Limonene		3.44
18.188	1,8-Cineole		26.04
18.368	cis-beta-Ocimene		1.21
19.057	trans-beta-Ocimene		2.59
19.829	delta-3-Carene		0.01
20.642	cis-Linalool oxide (furanoid)		0.06
21.716	trans-Linalool oxide (furanoid)		0.13
22.701	Linalool		41.83
22.856	Hotrienol		0.08
22.970	Unidentified		0.01
23.952	alpha-Fenchol		0.02
24.542	allo-Ocimene		0.13
25.375	neo-allo-Ocimene		0.03
25.880	Camphor		12.52
26.990	Citronellal		0.02
27.578	Borneol		0.66
28.172	Terpinen-4-ol		1.31
28.668	Unidentified		0.01
28.961	Hexyl butyrate		0.02
29.169	alpha-Terpineol		1.48
30.250	Octyl acetate		0.25
31.156	Nerol		0.08
32.923	Linalyl acetate		2.26
35.262	Bornyl acetate		0.23
38.675	delta-Elementene		0.01
39.454	alpha-Cubebene		0.01
40.179	Neryl acetate		0.31
41.322	alpha-Copaene		0.13
41.463	Geranyl acetate		0.57
42.111	Unidentified		0.01
42.211	beta-Elementene		0.03
44.125	beta-Caryophyllene		1.29
44.747	gamma-Elementene		0.02
44.991	trans-alpha-Bergamotene		0.11
46.227	trans-beta-Farnesene		0.03
46.368	alpha-Humulene		0.17
47.580	trans-Cadina-1(6),4-diene		0.04
47.956	Germacrene D		0.24
48.852	Bicyclogermacrene		0.03
49.030	alpha-Muurolene		0.01
49.625	beta-Bisabolene		0.05
49.912	gamma-Cadinene		0.02
50.223	delta-Cadinene		0.07

R.Time	Name
52.621	Unidentified

Area%
0.02
100.00